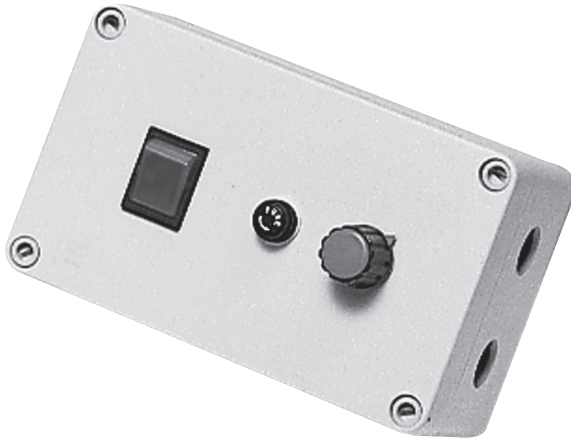


Charmbe®



FAN SPEED REGULATOR

MODELS: CFR300 & CFR600

Part Nos: 7630226 & 7630227

INSTALLATION INSTRUCTIONS



INTRODUCTION

Thank you for purchasing this Clarke Fan Speed Regulator, designed for use with Axial Plate Fans.

Before attempting to use the product, it is essential that you read this manual thoroughly and carefully follow all instructions given. In doing so you will ensure the safety of yourself and that of others around you, and you can also look forward to the product giving you long and satisfactory service.

GUARANTEE

This CLARKE product is guaranteed against faulty manufacture for a period of 12 months from the date of purchase. Please keep your receipt as proof of purchase.

This guarantee is invalid if the product is found to have been abused or tampered with in any way, or not used for the purpose for which it was intended.

Faulty goods should be returned to their place of purchase, no product can be returned to us without prior permission.

This guarantee does not effect your statutory rights.

ENVIRONMENTAL PROTECTION



Do not dispose of this product with general household waste. All tools, accessories and packaging should be sorted, taken to a re-cycling centre and disposed of appropriately.

SPECIFICATION

	CFR300	CFR600
Current for continuous use	1.5 amps	3 amps
Max. current (Fuse Rating)	3 amps	5 amps
Max fan Power	300 W	600 W
Dimensions	110 x 75 x 59 mm	110 x 75 x 59 mm

Please note that the details and specifications contained herein are correct at the time of going to print. However, CLARKE International reserve the right to change specifications at any time without prior notice.

SAFETY INSTRUCTIONS

1. On no account should you attempt to wire this product unless you are fully conversant with 230V or mains electrical circuits. If in doubt, you should consult a qualified electrician.
2. Do not use this regulator for fans whose rating exceeds that given in specification chart.
3. This appliance must be connected to a fused circuit. The fuse rating must not exceed that: value given in the specification chart.
4. IMPORTANT: Ensure the circuit to which the regulator is to be wired, is switched OFF at the mains junction box, and ensure this is so, by checking with a voltmeter.

ELECTRICAL CONNECTIONS

THIS APPLIANCE MUST BE EARTHED

This appliance is for use with a standard 230 volt 50Hz, 1 phase supply.

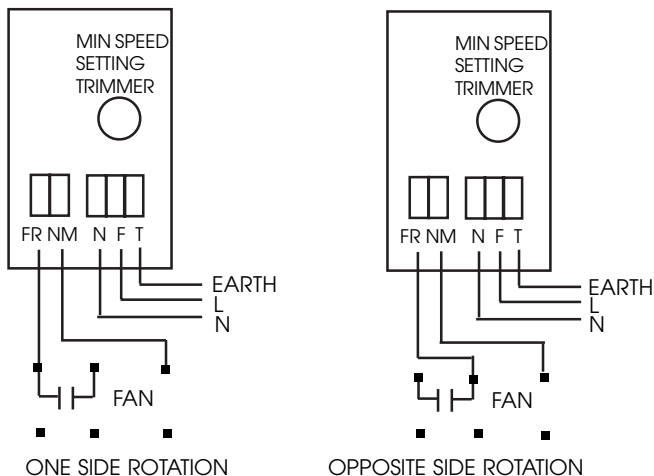
As the colours of the wires of this appliance may not correspond to the colours of the mains wires, you should proceed as follows:

Connect the EARTH mains wire to the terminal marked with a letter "T".

Connect LIVE or RED coloured mains wire to terminal marked with a letter "F".

Connect the NEUTRAL or BLUE coloured mains wire to the terminal marked with a letter "N" IMPORTANT: Proper cable connectors of an approved type must be used when connecting this appliance.

When connecting to the fan, ensure the wires are the correct way round. See wiring diagram, and consult the fans' installation instructions.



A SELECTION FROM THE VAST RANGE OF

Clarke®

QUALITY PRODUCTS

AIR COMPRESSORS

From DIY to industrial, Plus air tools, spray guns and accessories.

GENERATORS

Prime duty or emergency standby for business, home and leisure.

POWER WASHERS

Hot and cold, electric and engine driven - we have what you need

WELDERS

Mig, Arc, Tig and Spot. From DIY to auto/industrial.

METALWORKING

Drills, grinders and saws for DIY and professional use.

WOODWORKING

Saws, sanders, lathes, mortisers and dust extraction.

HYDRAULICS

Cranes, body repair kits, transmission jacks for all types of workshop use.

WATER PUMPS

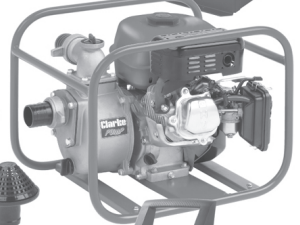
Submersible, electric and engine driven for DIY, agriculture and industry.

POWER TOOLS

Angle grinders, cordless drill sets, saws and sanders.

STARTERS/CHARGERS

All sizes for car and commercial use.



PARTS & SERVICE: 0208 988 7400

E-mail: Parts@clarkeinternational.com or Service@clarkeinternational.com

SALES: UK 01992 565333 or Export 00 44 (0)1992 565335

Clarke® INTERNATIONAL Hemnall Street, Epping, Essex CM16 4LG
www.clarkeinternational.com